

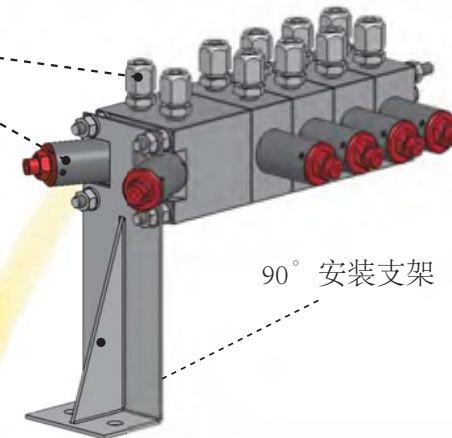
专为机器人手臂嵌入式应用特殊设计而成

- 每个模块配 2 路颜色 (最高可做 38 色)
- 1 个首模块 (1 路空气+1 路溶剂)
- 通过气动阀控制换色
- 气动阀开启压力: 6bar (更低压力可定制)

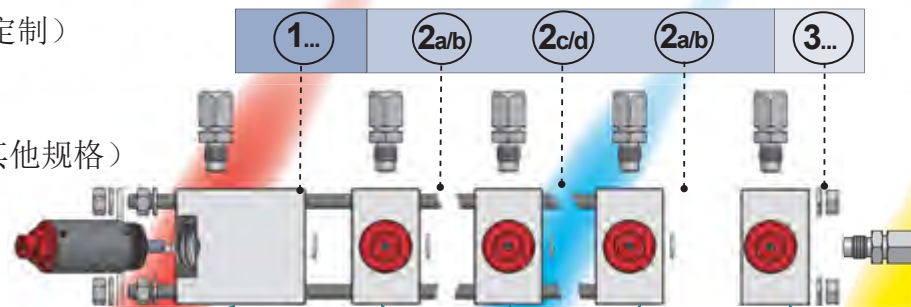
- 工作压力: 20bar

- 模块间通过 PTFE 密封
- 接口尺寸: $\phi 6/8\text{mm}$ 管连接 (可定制其他规格)
- 可选回路清洗功能
- 接头可选直通/直角/135° /120° 等
- 不同形式的安装支架可选
- 易于维护和更换配件

气动阀和接头



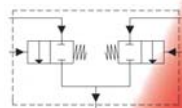
90° 安装支架



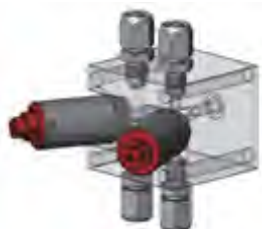
1a



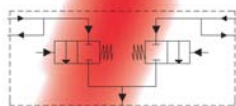
不带回流



1b



带回流

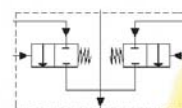


输入模块

2a



不带回流



2b



带回流

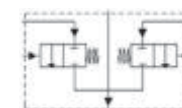


中间模块

3a



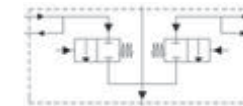
不带回流



3b



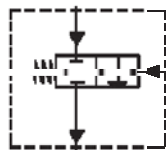
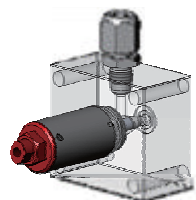
带回流



输出模块



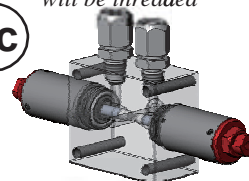
1c



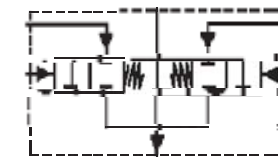
带回流

输入模块

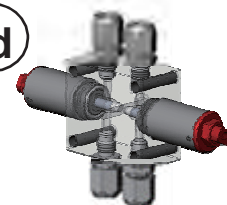
2c



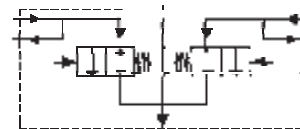
不带回流



2d



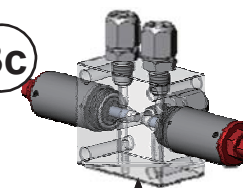
带回流



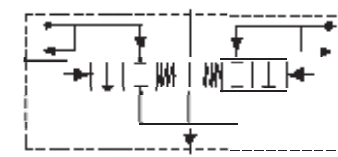
中间模块

Note : If there are more than 8 blocks, 1 the intermediate block will be threaded

3c

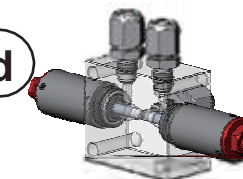


输出：带回流控制



回流控制

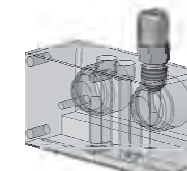
3d



Blind output block - without recirculation



3e

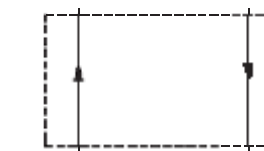


(to install on a pump)

Output block RAC



Buffer for recirculation



输出模块

